

# COPY AND PASTE BETWEEN PROJECTS IN PINNACLE STUDIO 14

On page 157 of Pinnacle Studio 14 Revealed there is a description of how to copy and paste one project into another. This feature is undocumented in the manual, but recognised by Pinnacle as the support department often recommend it.

The copy and paste method of combining two or more projects is very useful, but it can also be used to paste an old project into a new, empty one. You might want to do this for a number of reasons. Studio 14 and all the versions before do not let you change the project settings of a movie once you have started it. You might have accidentally chosen the wrong project settings, or used the “Set from first clip added to project” and then used a non-typical clip to start your project with.

Another use for copy and pasting projects is to attempt to repair a corrupt project. Occasionally a movie that behaves oddly or refuses to render may be rescued by copying it into a new project.

The bad news is that you cannot copy and paste between projects that have a different underlying frame rate. For example, NTSC projects cannot be pasted into PAL projects, and vice versa. You **can** paste an interlaced or progressive NTSC project into a High Definition 60i (interlaced) or 30p (progressive) project because they are all based on 29.97 frames per second. You can also paste an interlaced or progressive PAL project into HD projects based on 50 frames per second.

Project resolution or aspect ratio is no bar to copy and pasting, as you can see from the examples above, and you can downsize as well as upscale. If you have a short high definition movie that you were going to include in a longer project destined for a standard definition DVD then you could also convert the settings it using the following method.

Sometimes people report that having ensured that the frame rates match, copy and paste **still** doesn't seem to work for them. It normally turns out that they are trying to paste the new project into the Album, not onto the Timeline, which doesn't work. It's also possible that Studio's method of automatically naming new projects can cause problems, particularly if you haven't saved the old project.

What follows is a step-by-step description that normally solves problems with copy and paste. Some of the steps may not be strictly required, but following the exact procedure should ensure success. The screen shots show me converting a Standard Definition 4:3 slideshow project into a High Definition 16:9 project.

## 2 - COPY AND PASTE BETWEEN PROJECTS

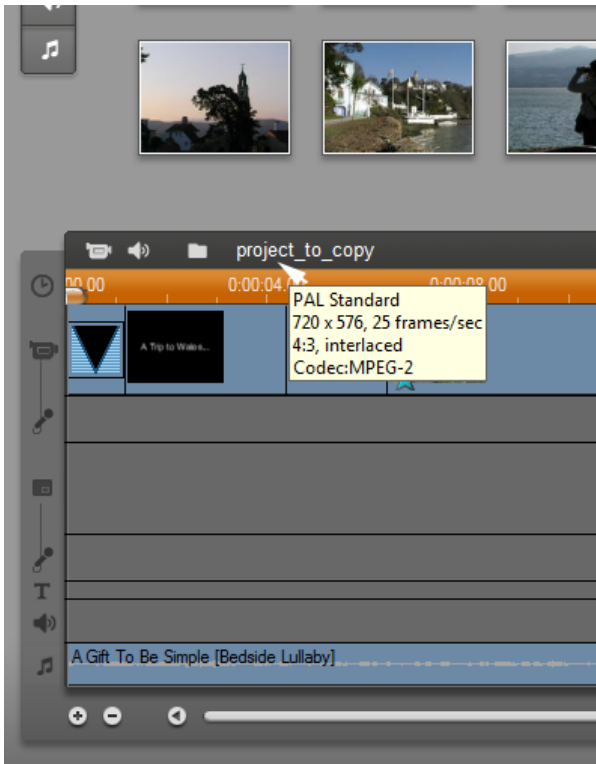
---

The first steps is to....

**Make sure the project you want to copy isn't using a Studio generated name.** If it is called *My Movie xx*, then do a *Save As* operation and call it something like *Project\_to\_copy*

**Check the project settings of the project you wish to copy.** Hover your mouse

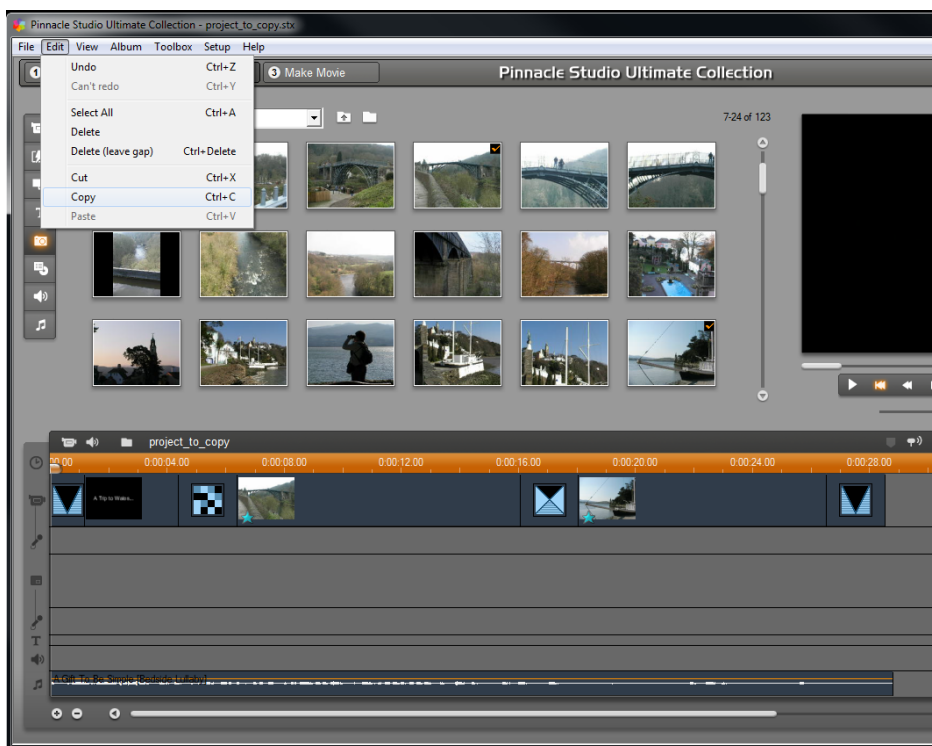
over the project name top left of the timeline and a tooltip will pop up.



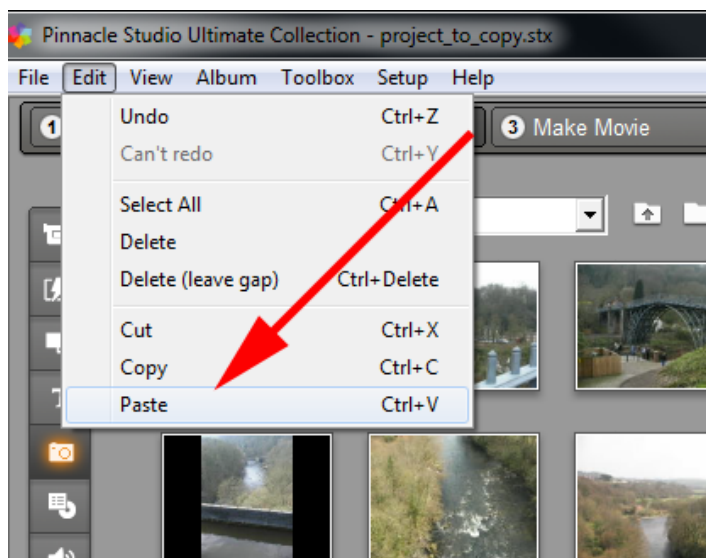
Carefully check the frame rate – it may be 60hz based (29.97fps, 30p or 60i) or 50hz based (25fps, 25p or 50i). Later versions of Studio may support 60p and 50p formats and I expect these to work with 29.97 and 25 fps projects respectively. 24p formats will only work with other 24p formats.

**Copy the entire timeline.** The quickest way to do this is to select one clip on the timeline, then press CTRL-A. The whole project should now be highlighted. Now you can now use the *Edit* menu command for *Copy* or stick with keyboard shortcuts and press CTRL-C.

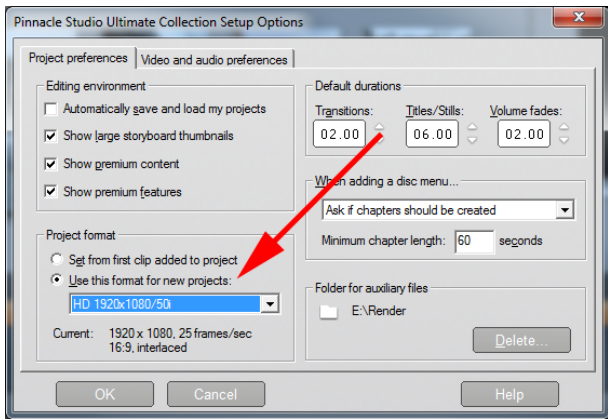
## COPY AND PASTE BETWEEN PROJECTSTUDIO 14 - 3



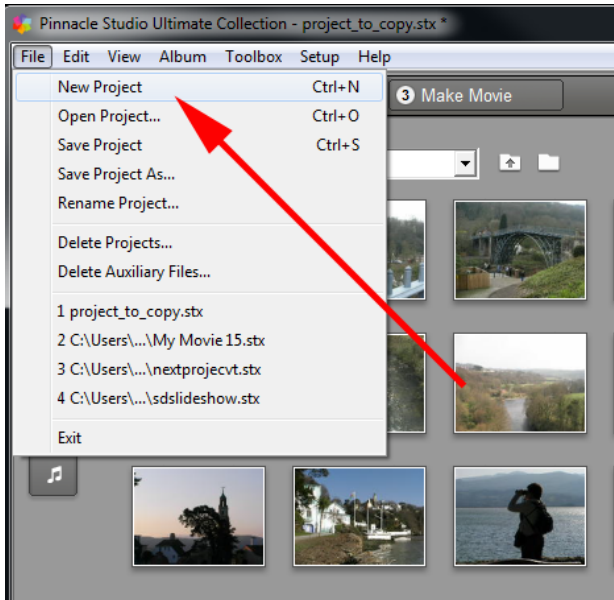
Check the clipboard buffer. Open up the Edit menu and check that Paste isn't greyed out.



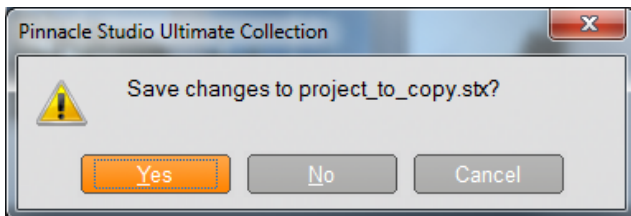
## 4 - COPY AND PASTE BETWEEN PROJECTS



**Set the new project parameters.** Open *Setup/Project Preferences* and in the Project format box bottom left make sure the “*Use this format for new projects*” radio button is set. From the drop down box select the new format you require. It must have the same underlying frame rate of 25/50 or 29.97/30/59.94/60 or 24.



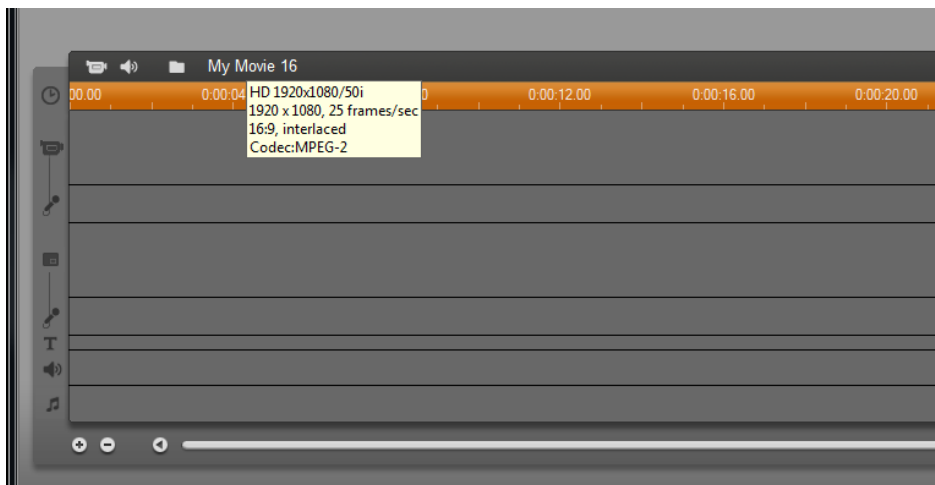
**Start a new project.** This is the most important step. From the *File* menu select *New* and you will be asked if you want to...



**Save the old project** if you have made changes since the last save. Do so if prompted. The timeline should now clear.

## ***COPY AND PASTE BETWEEN PROJECTSTUDIO 14 - 5***

**Check your new settings.** Hover your mouse as described before in order to check you really have got the correct settings you require.

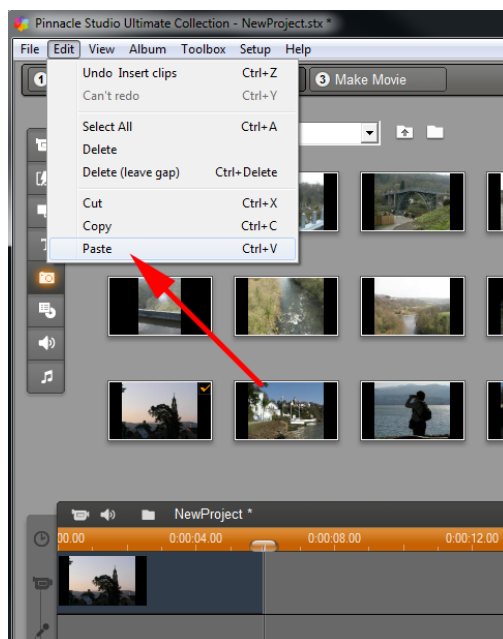


**Save your new project.** Use *Save As* again to give the project a name such as *Newproject*.

**Check the File drop down menu** to see if paste is greyed out. If it is then...

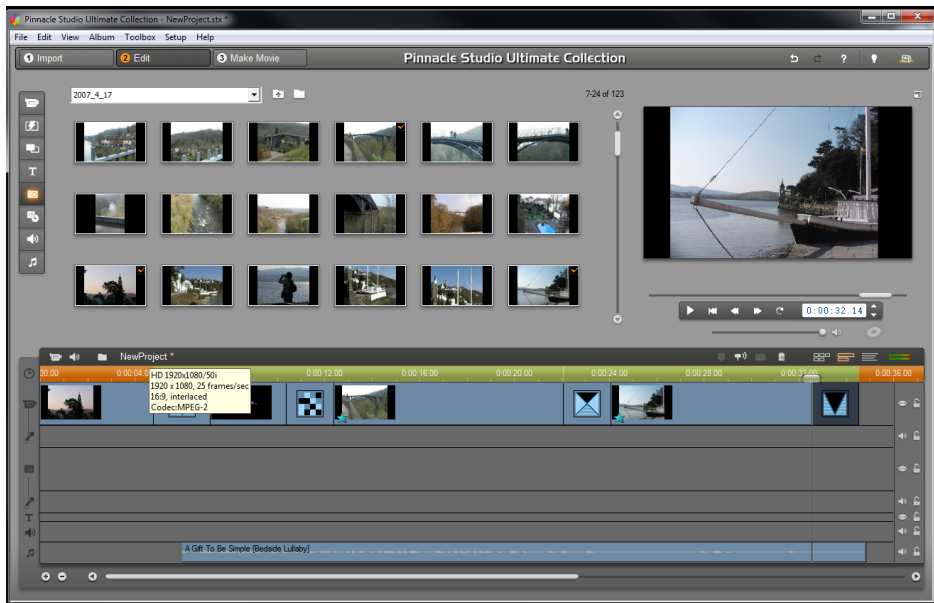
**Ensure the timeline is active.** The easiest way to do this with a new project is to drag a clip from the album and put it on the timeline, and then move the scrubber to the end of the clip.

You should now be able to **Paste** and....



## 6 - COPY AND PASTE BETWEEN PROJECTS

...the old project will appear on the new project timeline.



Once you have done so, delete the random clip you may have put on the front of the timeline and the process is complete - but don't forget to *Save*.... Your project just in case. :-)

